

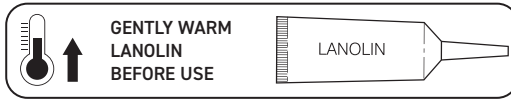
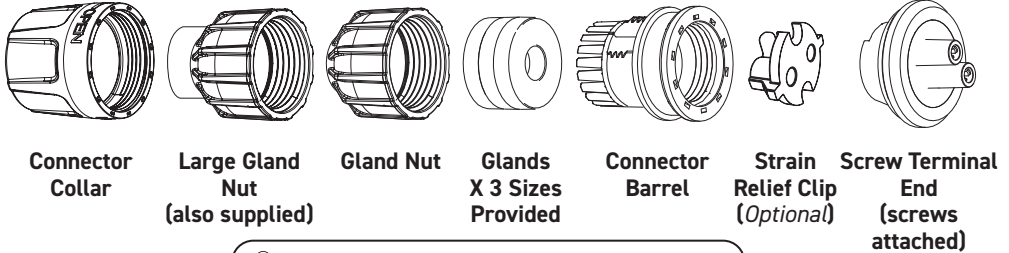
N1 N3 R6

PLUG ASSEMBLY INSTALLATION GUIDE

BEFORE YOU START

ENSURE THAT ALL POWER TO EXISTING LIGHTS ARE SWITCHED OFF.

INCLUDED PARTS



1 CABLE PREPARATION

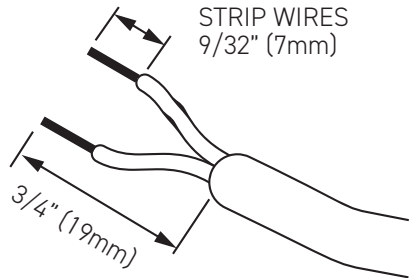
ALL CABLE CONNECTIONS ARE TO BE DONE AT SURFACE LEVEL, AND OUT OF WATER.

STRIP POWER CABLE TO SPECIFIED LENGTH.

NOTE

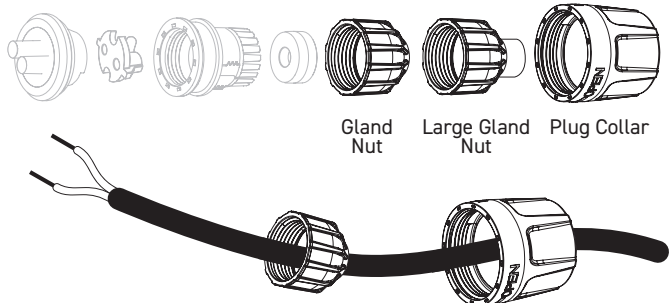


IF CABLE LENGTH ALLOWS, CUT CABLE BACK UNTIL FRESH COPPER APPEARS.



2 START ASSEMBLY OF CONNECTOR PLUG

FEEED THE PLUG COLLAR ONTO THE CABLE, THEN FEED THE **APPROPRIATE** GLAND NUT ONTO THE CABLE.

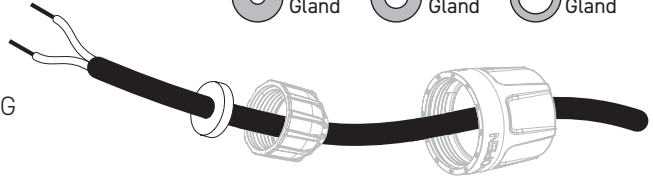


3 CHOOSE THE APPROPRIATE GLAND

SELECT THE **APPROPRIATE** CABLE GLAND FROM THE THREE SUPPLIED THAT SNUGLY FITS THE EXISTING POWER CABLE WITHOUT BULGING.

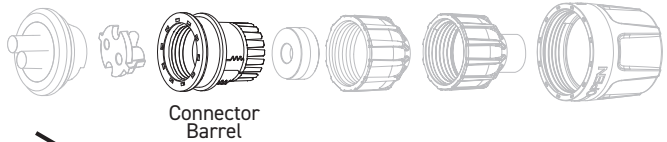


THE GLAND FITMENT SHOULD BE FIRM OVER THE CABLE WITHOUT BULGING OR DEFORMING THE GLAND.

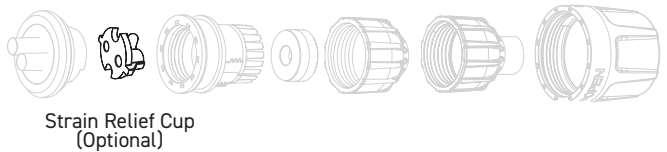


4 CONTINUE ASSEMBLY OF CONNECTOR PLUG

FEED THE CONNECTOR BARREL ONTO THE CABLE.



5 STRAIN RELIEF CLIP



OPTION 1: WHEN USING THE MEDIUM OR LARGE CABLE GLANDS, THE STRAIN RELIEF CLIP IS NOT REQUIRED. FOLLOW STEP 6A (IGNORE STEP 6B).

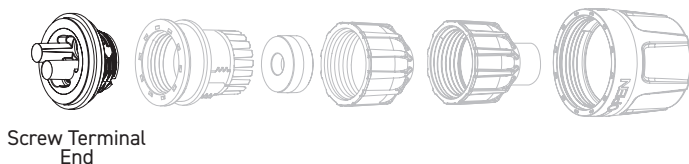
OPTION 2: THE STRAIN RELIEF CLIP MUST BE USED WHEN THE SMALL CABLE GLAND IS USED. FOLLOW STEP 6B (IGNORE STEP 6A).

STRAIN RELIEF CLIP REQUIRED

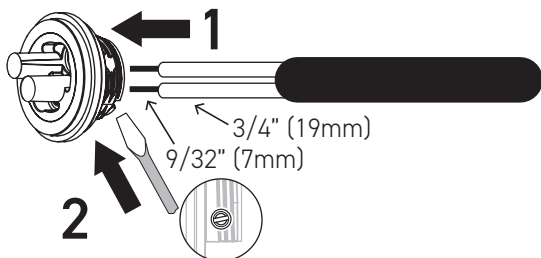


6A CONNECT THE SCREW TERMINAL END

- 1: FEED THE TWO STRIPPED CABLE ENDS THROUGH THE TWO HOLES IN THE BACK OF THE SCREW TERMINAL END.

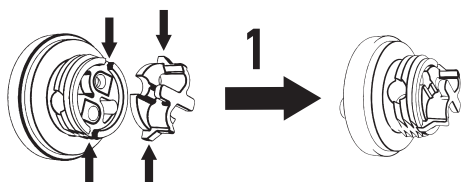
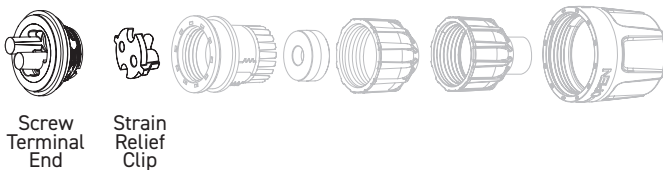


- 2: USE A FLAT BLADE SCREWDRIVER TO TIGHTEN THE FASTENERS ON EITHER SIDE OF THE SCREW TERMINAL.



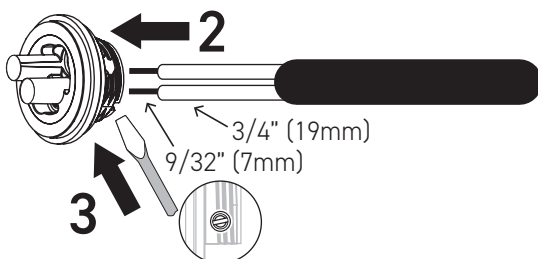
6B CONNECT THE SCREW TERMINAL END

- 1: ATTACH THE STRAIN RELIEF CLIP TO THE SCREW TERMINAL END.

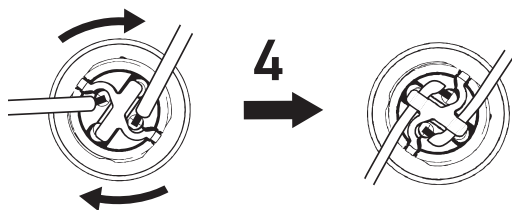


- 2: FEED THE TWO STRIPPED CABLE ENDS THROUGH THE TWO HOLES IN THE BACK OF THE SCREW TERMINAL END.

- 3: USE A FLAT BLADE SCREWDRIVER TO TIGHTEN THE FASTENERS ON EITHER SIDE OF THE SCREW TERMINAL.

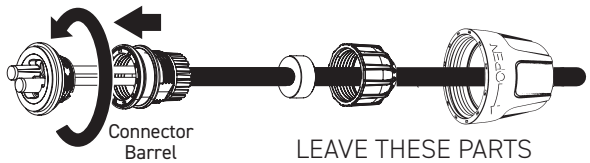


- 4: TWIST THE SCREW TERMINAL AND LOOP CABLE ENDS UNDER THE STRAIN RELIEF CLIP.



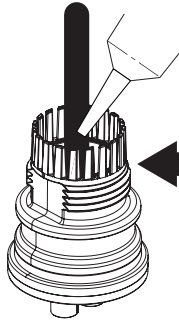
7 START ASSEMBLY OF CONNECTOR PLUG

CAREFULLY THREAD CONNECTOR BARREL ONTO SCREW TERMINAL AND TIGHTEN FIRMLY BY HAND.



LEAVE THESE PARTS DISASSEMBLED UNTIL AFTER ADDING LANOLIN.

8 ADD LANOLIN

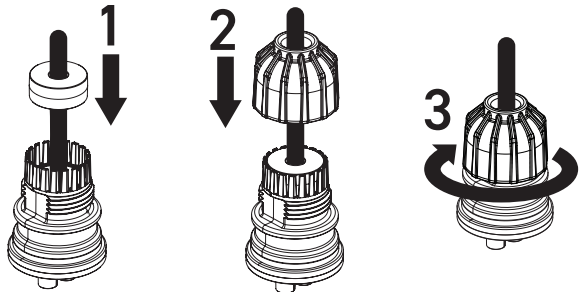


FILL BACK OF CONNECTOR BARREL WITH LANOLIN UP TO THE INDICATED POINT.

FILL TO HERE
(ALLOWING ROOM FOR GLAND)

9 CONTINUE ASSEMBLY OF CONNECTOR PLUG

- 1: SEAT CABLE GLAND ALL THE WAY INTO CONNECTOR (DO A VISUAL CHECK TO MAKE SURE A SEAL BETWEEN GLAND AND CABLE).
- 2: CAREFULLY THREAD GLAND NUT ONTO CONNECTOR BARREL.
- 3: TIGHTEN GLAND NUT FIRMLY BY HAND.



10 COMPLETE ASSEMBLY OF CONNECTOR PLUG

- 1: POSITION CONNECTOR COLLAR ALL THE WAY TO THE END READY FOR ATTACHMENT TO THE LIGHT ASSEMBLY.

