

retro

REPLACEMENT LED POOL LIGHT

Compatibility

All major pool controller brands:

- IntelliTouch®
- Omnilogic®
- AQUALINK®

UL Listed

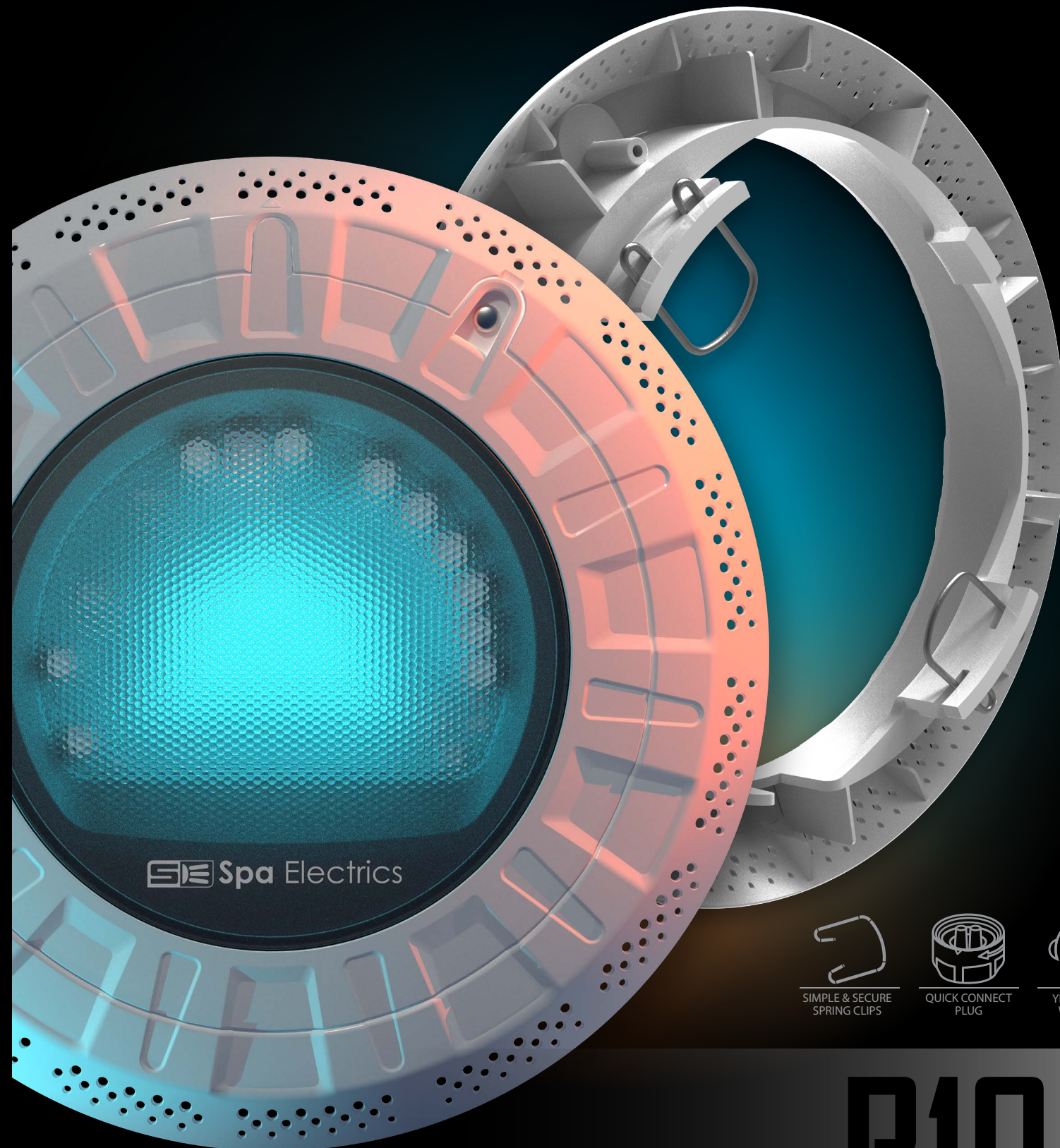
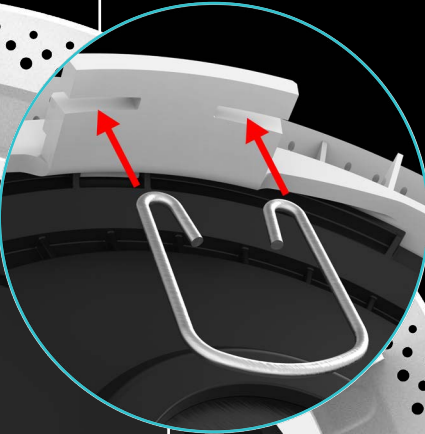
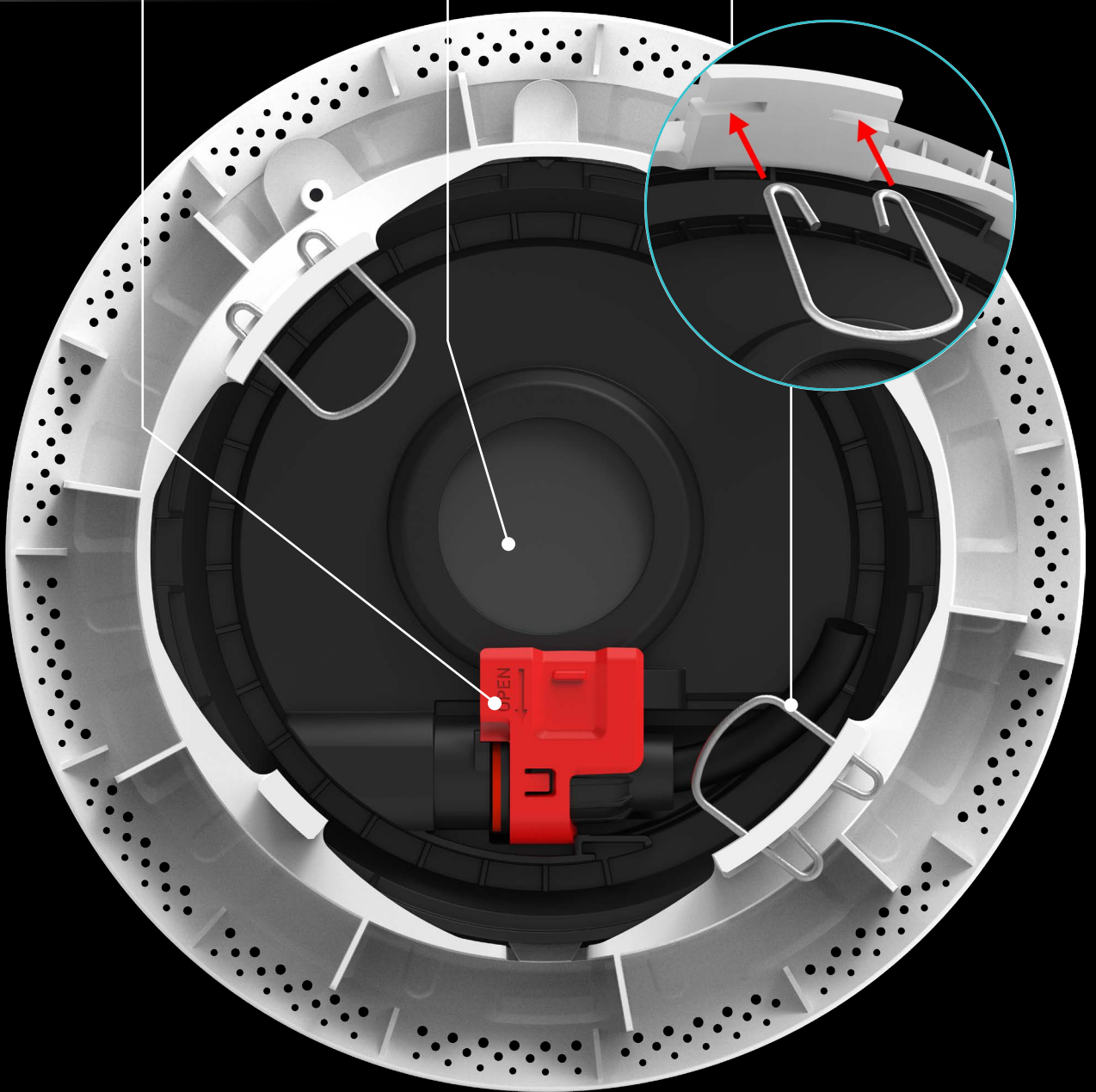
Simpler Installation and Servicing
Quick-Connect Plug

Super Cool

Water-cooled system
3000lm+ Brightness

Hayward Shallow Niche Adaptor

Designed for Hayward's Twist Lock Latch



Scan to see more

- SIMPLE & SECURE SPRING CLIPS
- QUICK CONNECT PLUG
- 3 YEAR SERVICE WARRANTY



Product Specification	LED Color	LED Array	Wavelength	Lumens	Color Temp	
VOLTAGE:	10.5 - 13v AC	WHITE:	Warm	n/a	3200	3000k
WATTAGE:	45w	WHITE:	Daylight	n/a	3200	4000k
INGRESS PROTECTION:	IPX8	BLUE:	BLUE	465nm	1000	n/a
SUITABLE FOR:	10" Hayward LFGUY1000	MULTI-PLUS:	RGB+W	Varies	3200	4000k
COMPATIBLE:	Extra Safe Low Voltage LiTYARD 2 and LVX Series					

For more information on the **Retro R10H** and our other products, please visit our website or contact our US Office:
Toll Free: 1 800 708 5545
Email: info@spaelectrics.com
Web: www.spaelectrics.com



www.spaelectrics.com |

20251001



R10H

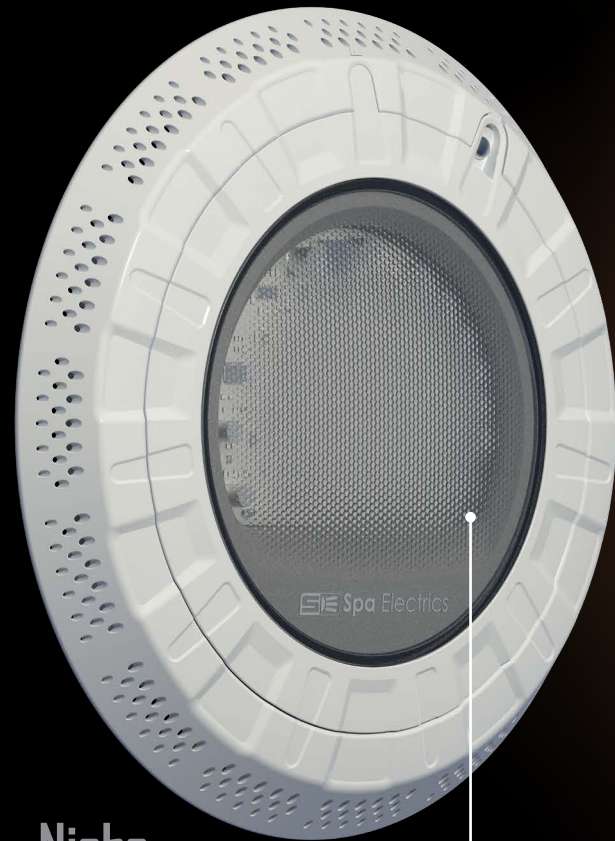
10" REPLACEMENT POOL LIGHT FOR HAYWARD® LFGUY1000

© Niche and Pool Controller brands mentioned remain copyright of respective manufacturers

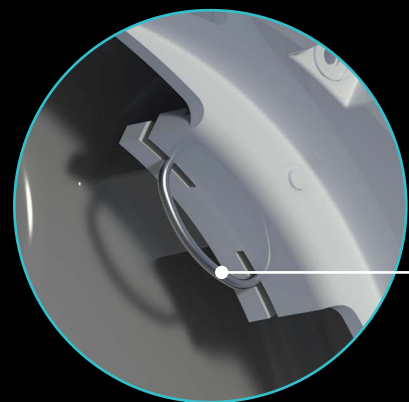
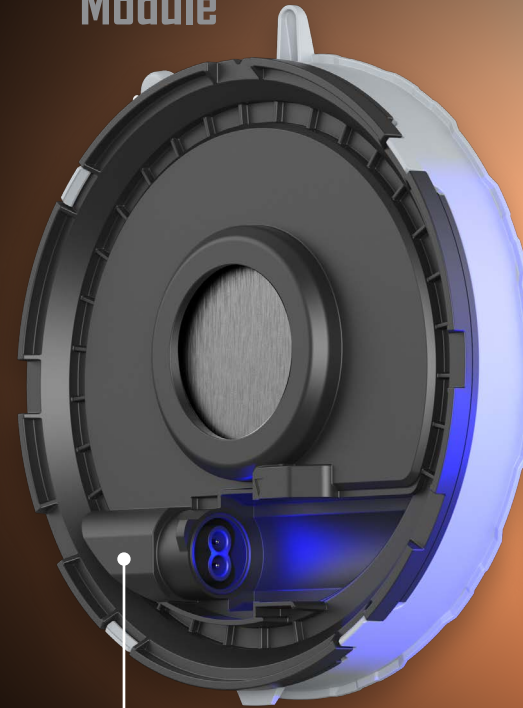
Seamless Fit. Brilliant Results.

The best **Retro-Fit** light for the 10" Hayward® LFGUY1000 Shallow Niche!

R10H



Light
Module



Spring Clip Installation

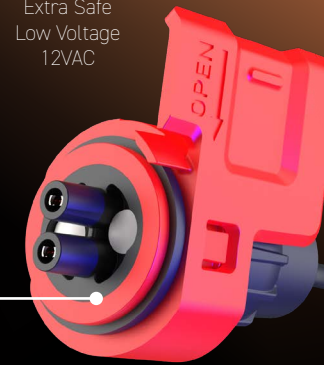
The Retro R10H installs in minutes with a simple turn-and-lock system. Using two **Stainless Steel Spring Clips**, the adapter plate securely fits the existing Hayward® UCL LFGUY100 Shallow Niche—just turn, clip, and you're done.

Niche
Adapter

Advanced Cooling & Performance

The Retro R10H delivers over 3000 lumens of brilliant LED light, powered by Spa Electrics' advanced **water-cooled heat sink** technology. Retaining the brilliance of a 300W halogen while extending product life, it keeps your pool brighter, safer, and more stylish for longer.

Extra Safe
Low Voltage
12VAC



Connects
up to 10AWG
cord size

Quick-Connect Plug

Say goodbye to changing cables forever with Retro R10H's **Quick Connect Plug**. Connecting to the existing pool light cable in the niche, the **UL Listed Quick Connect Plug** ensures fast and reliable installation while also enabling easier future servicing in the field.

The R10H is the only Retro-Fit light for the Hayward® Universal ColorLogic® / CrystaLogic® LFGUY Niche you'll ever need!

There's no need for expensive repair work as the Retro R10H's Adapter integrates with the existing niche, making replacement simple and seamless.

retro
REPLACEMENT LED POOL LIGHT