

Compatibility

All major pool controller brands:

IntelliTouch®
 Omnilogic®
 AQUALINK®

Carvin® Installation

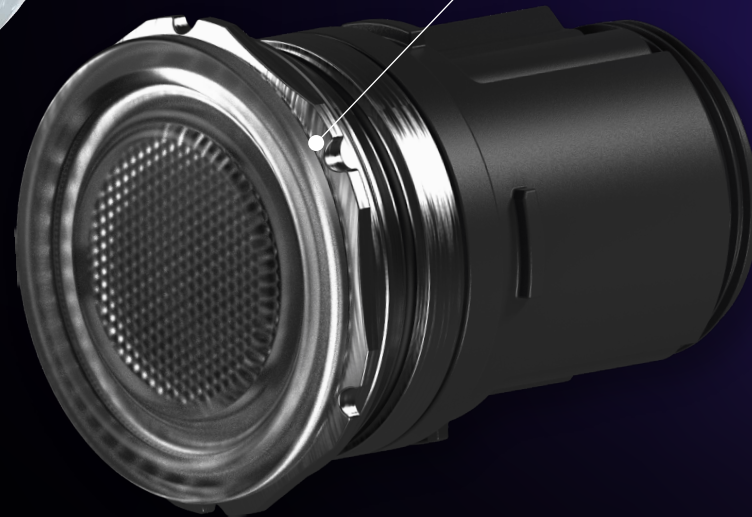
The **Retro T1** is fully compatible with Carvin® 1.5" threaded fittings using our purpose built Carvin® Adapter. The adapter threads directly into the existing fitting, creating a secure connection that's ready to accept the T1 light for quick, hassle-free installation.

retro

REPLACEMENT LED POOL LIGHT



The premium **Titanium Heat Sink** ensures superior performance by efficiently transferring heat to the surrounding water, keeping the light cool and maximizing longevity.



Scan to see more about our Retro Products

compatible with 1.5" FITTINGS



PRODUCTION SPECIFICATIONS

VOLTAGE:	10.5 ~ 13v AC
WATTAGE:	8w
INGRESS PROTECTION:	IPX8
SUITABLE FOR:	Concrete, Vinyl, and Fiberglass Pools
COMPATIBLE:	Extra Safe Low Voltage LITYARD 2 and LVX Series

LED LIGHT TYPE MULTI PLUS

LED ARRAY:	RGB+W
WAVELENGTH:	Varies
LUMENS:	375lm
COLOR RANGE:	7 Colors + 4 Shows
POOL CONTROLLERS:	Compatible with most major brand pool controllers

For more information on the **Retro T1** and our other products, please visit our website or contact our US Office:

Toll Free: **1 800 708 5545**
 Email: info@spaelectrics.com
 Web: www.spaelectrics.com

Spa Electrics®

www.spaelectrics.com |

Spa Electrics®

T1

UNIVERSAL 1.5" REPLACEMENT POOL LIGHT

© Niche and Pool Controller brands mentioned remain copyright of respective manufacturers

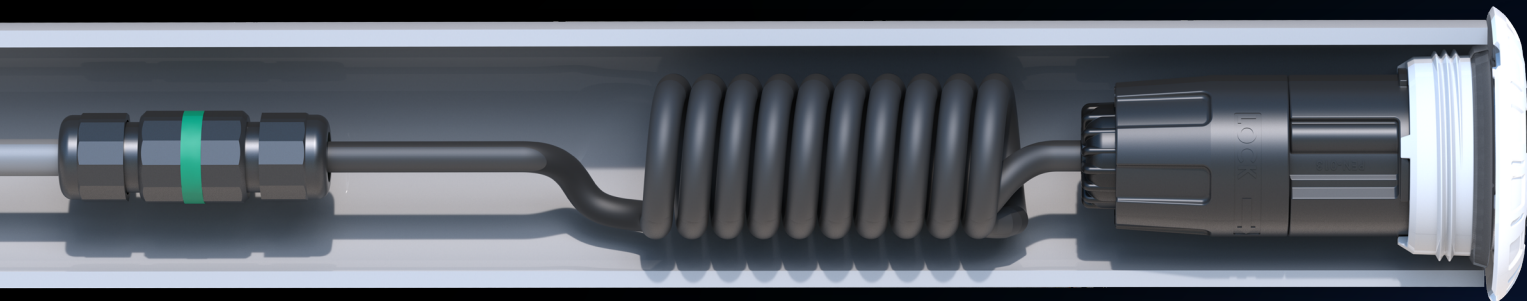
20260320

One Light. Multiple Applications.

T1

Threaded 1.5" Installation

The standard installation method of the Retro T1.



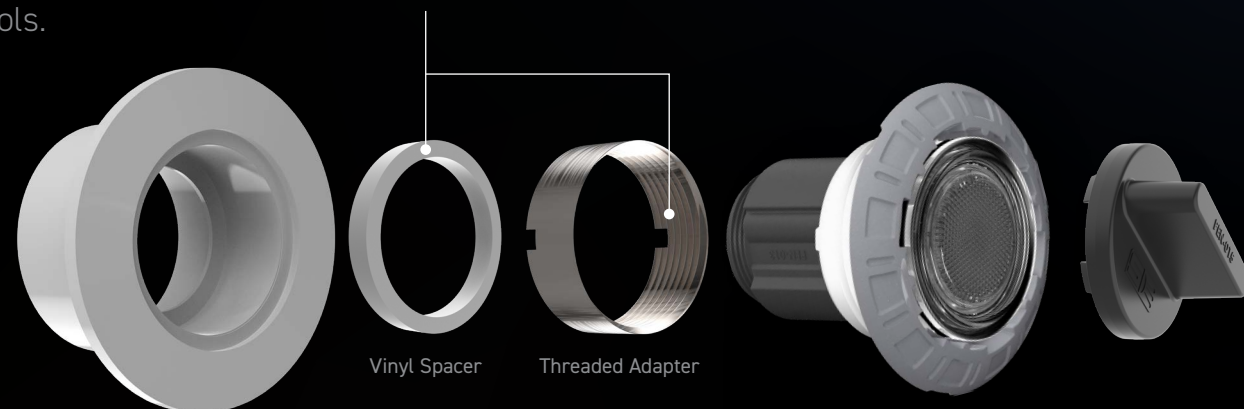
Easily wire the existing cable into the included **Cable Joiner**, making installation and service quick and simple.

Non-Threaded Installation

Our **Pipe Friction Sleeve** is engineered to snap securely onto the light engine and fit seamlessly into any non-threaded 1.5" pipe.

Hayward® Non-Threaded Bulkhead Installation

Using the **Threaded Adapter** insert, the Retro T1 installs easily into Hayward® non-threaded bulkheads, while the **Vinyl Spacer** ring enables installation in vinyl pools.



Globrite® Installation

The **Retro T1** installs seamlessly into a Pentair® Globrite® fitting using our precision-designed **Globrite® Adapter**. Once inserted, the adapter locks securely into place, ensuring a tight, reliable fit.



Innovative Plug & Cable

The **Curly Cable** design, paired with the UL Listed **Quick-Connect Plug**, allows the light to be taken out, above the water line, without the need to pull the cable through the conduit.

Revolutionizing the pool industry, the **Retro T1** introduces a sleek pencil-light design that combines effortless installation, simple serviceability, and unmatched versatility across multiple retrofit applications.

retro
REPLACEMENT LED POOL LIGHT